

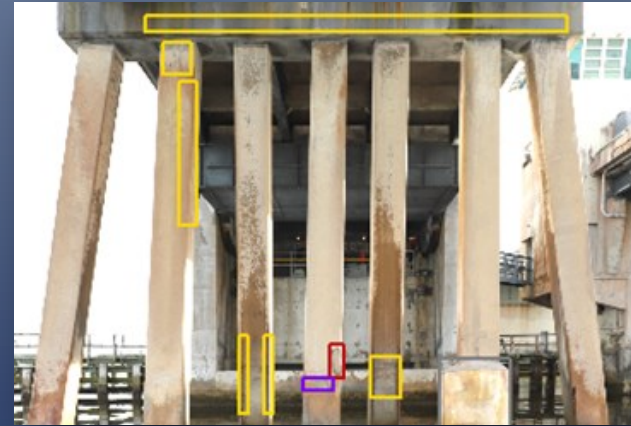


# Kennedy Space Center (NASA) Bridge Inspection, Florida

## SUMMARY

NEXCO and the University of Central Florida (UCF) collaboratively evaluated two target bridge structures managed by the National Aeronautics and Space Administration (NASA) at Kennedy Space Center (KSC). The bridges carry NASA Causeway over the Indian River. With the implementation of rapid scanning NDE technology, the total surface area of deficient findings was mapped and quantified.

Our deck scanning system, DTSS, was used to scan the deck top surface, while our universal scanning system, U3S, was used to scan the soffit, girders, and bents. The field team completed the pilot project within a few days' time. Data captured by boat can result in blurred or low-quality imagery, but the U3S system can compensate for the boat's movement and still yield excellent resolution for crack mapping.



## OVERVIEW

### Clients:

University of Central Florida

### Contact info:

Dr. Necati Catbas  
catbas@ucf.edu

### Quantity:

200,000 sqft

### Project period:

Jan. 2021



**NEXCO - West USA**

**8300 Boone Blvd. Suite 260**

**Vienna, VA 22182**

**+1 (703) 734 - 0281**

**info@w-nexco-usa.com**

**www.w-nexco-usa.com**